

TECHNICAL DATA SHEET

SPECIFICATION

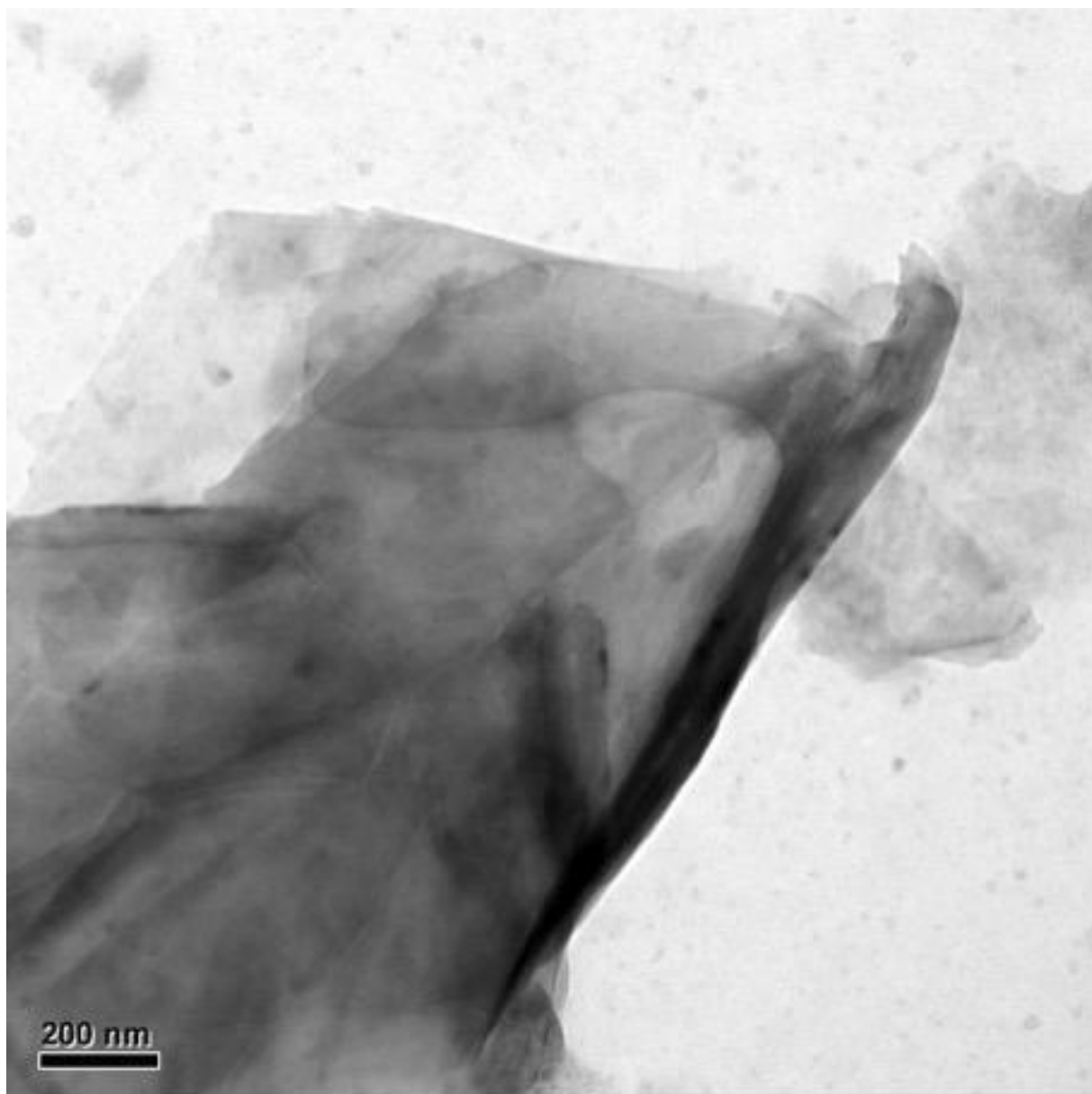
1 % GRAPHENE DISPERSION IN DMA (AD 1G-DMA)

GRAPHENE	DESCRIPTION
GRAPHENE CONTENT	1% (wt%)
THICKNESS	5-10 nm
LATERAL DIMENSION	10 μ m
SOLVENT	DMA
PHYSICAL FORM	LIQUID
MORPHOLOGY OF DISPERSED NANO PARTICLE	2D SHEET
COLOUR	BLACK

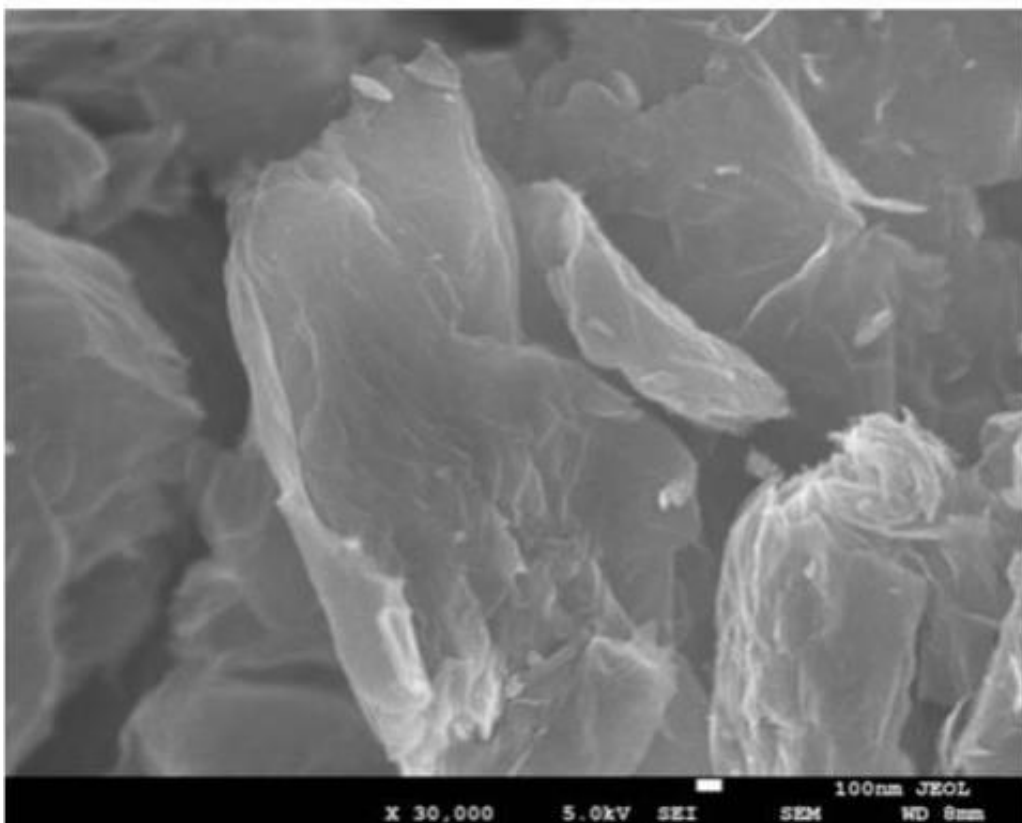
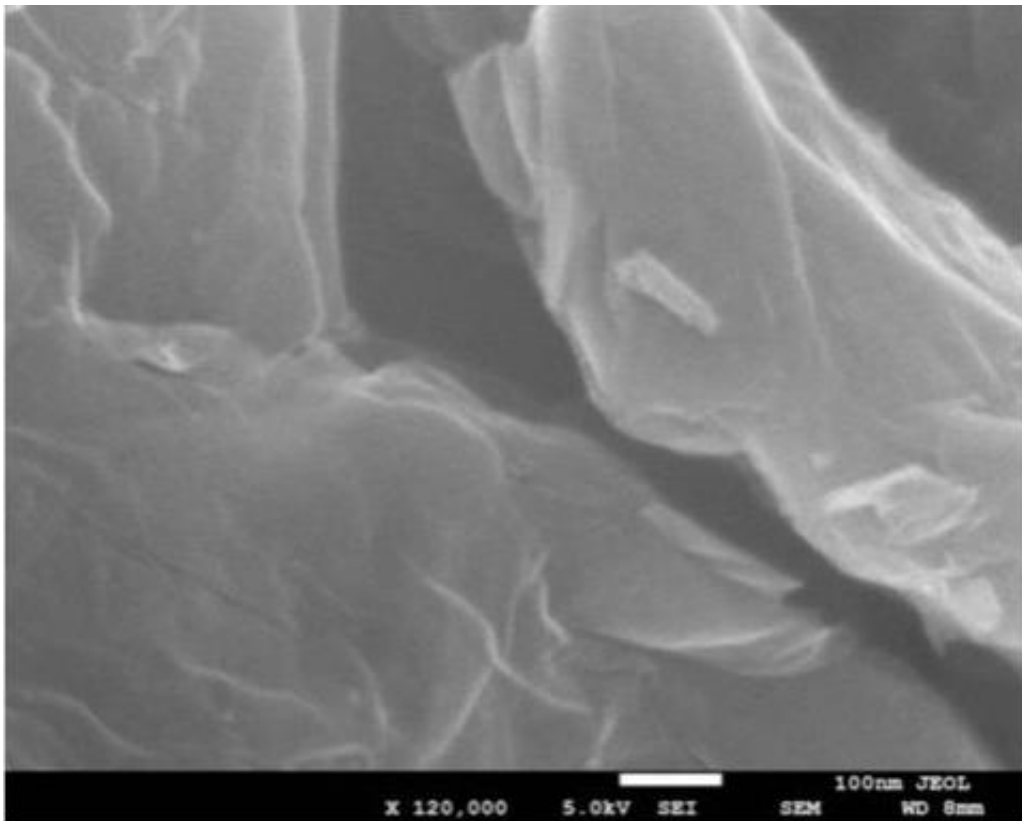
Adnano Technologies Private Limited

#31L, 2nd Cross, KIADB Machenahalli Industrial Area, Shimoga-577222, Karnataka, India

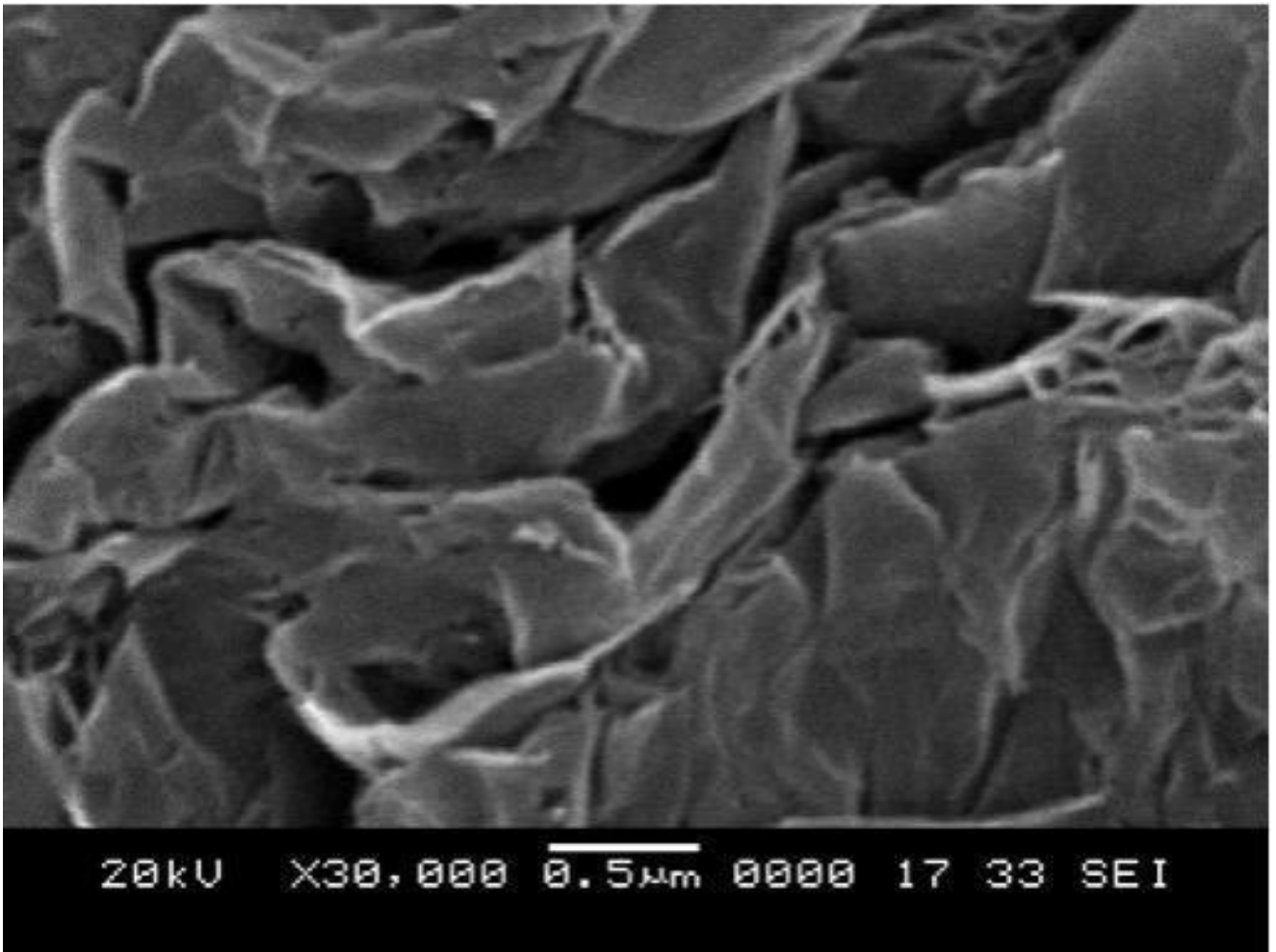
HRTEM IMAGES



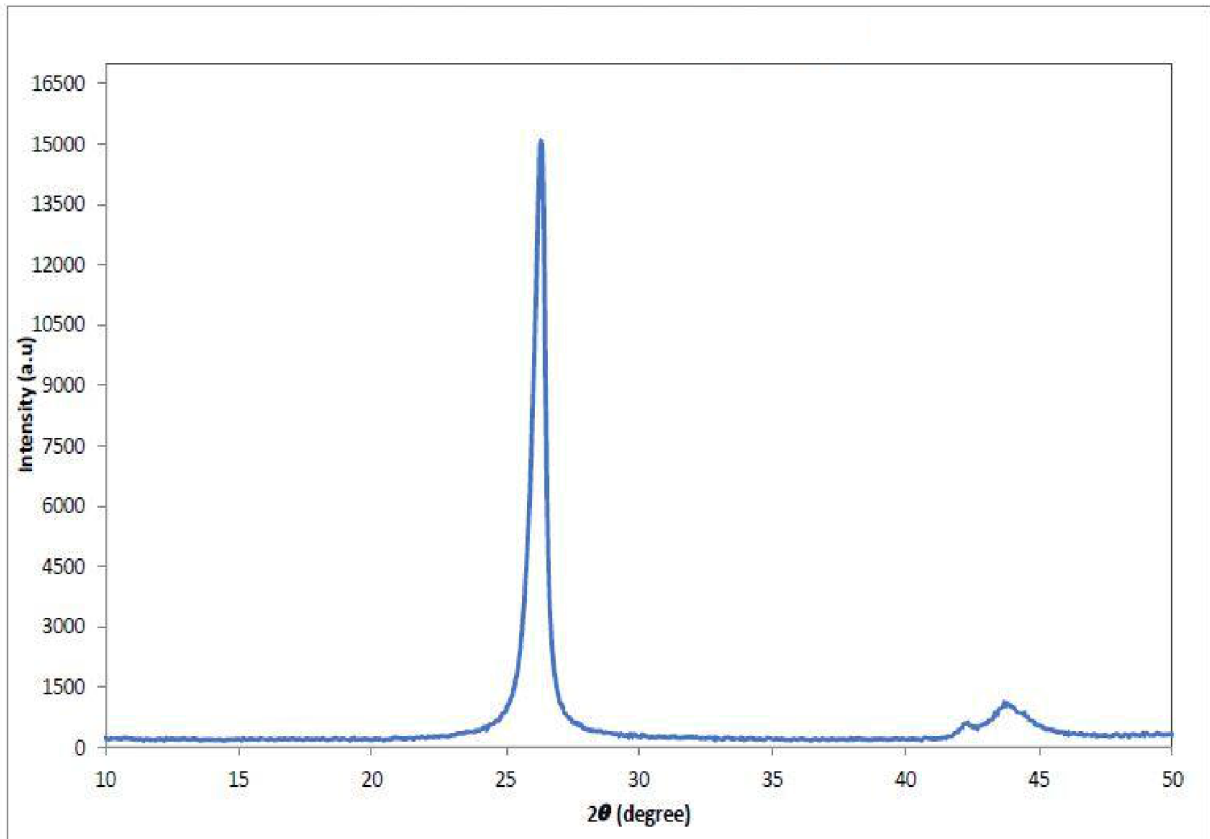
FESEM



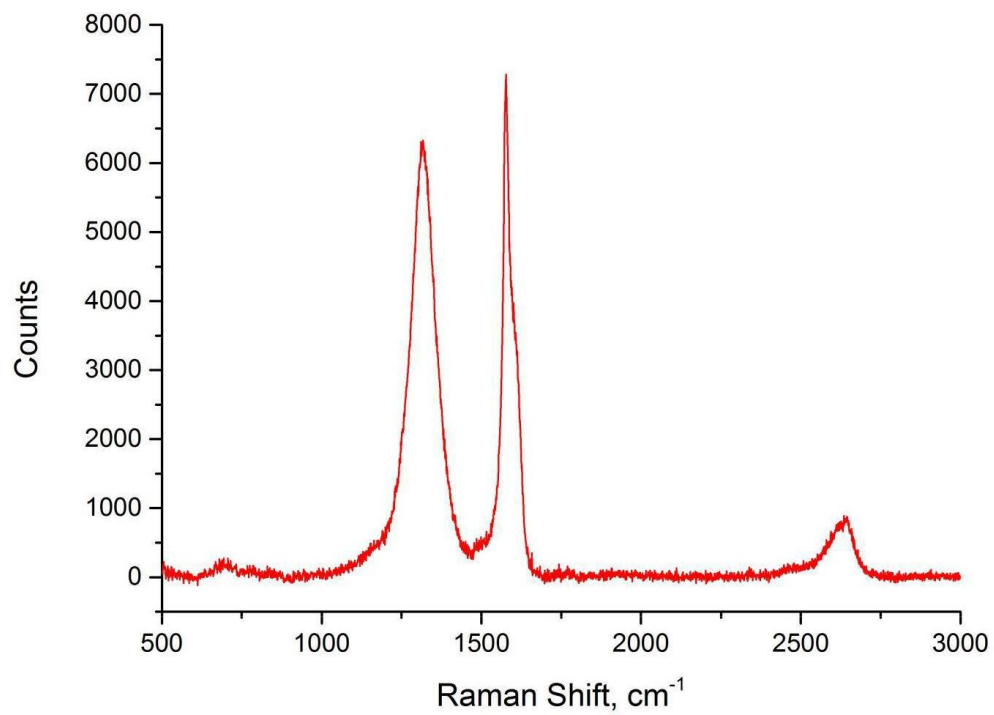
SEM



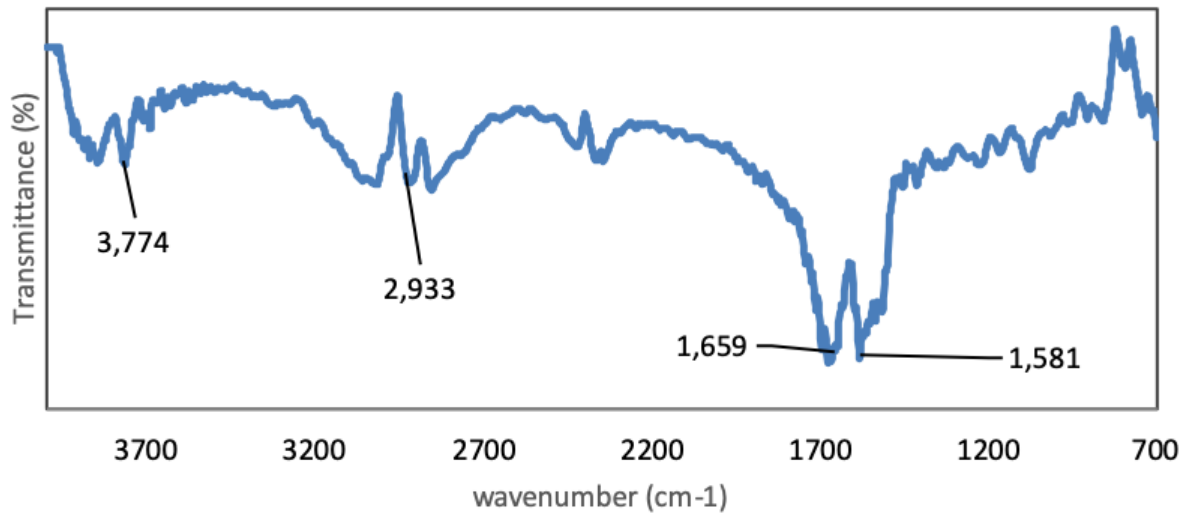
XRD



RAMAN ANALYSIS



FTIR



DISCLAIMER

The values are typical and are for very general guidance and must not be used as a basis for specifications as concrete. Information contained in this publication, and otherwise supplied to users, is based on our general experience and is given in good faith, but we are unable to accept responsibility in respect of factors which are outside our knowledge or control. No warranty, either expressed or implied, is hereby made. The recommended industrial hygiene and safe handling procedures are believed to be generally applicable. Please refer MSDS of respective product for safe use.